

Administrators' Notebook



National Lutheran Schools Week March 7-13, 2010

March 2010

“Securing Each Child’s Future-For a Life of Service”

1 Cor. 12:5

We thank God for the 52 early childhood centers, 47 elementary schools, 6 high schools and Concordia University-St. Paul located in the Minnesota South District.

Lutheran schools lead –

- Young people to a closer relationship with Jesus.

- Lead in academic excellence.
- Lead by teaching children how to be leaders and develop leadership skills.
- By providing the services that families need today – childcare, parenting, and family support.

We thank God for all of our teachers and for the dedication and commitment to Lutheran education. As we celebrate National Lutheran

Schools Week, pray for the ministries that meet daily in our Lutheran schools. What a blessings it is to minister to children and their families and lead them in learning more about Jesus Christ. To God be all glory and praise!

National Lutheran Schools Week 2010



Securing Each Child's Future—For a Life of Service
"There are varieties of service, but the same Lord." - 1 Cor. 12:5

Volume 6 Issue 5

Special points of interest:

- ✓ NLSW 2010
- ✓ 10 Reasons
- ✓ National Lutheran School Funding
- ✓ 600 Pound Gorilla

2009-2010 Lutheran School Statistics

Early Childhood Centers	1,400
Elementary Schools	945
High Schools (Includes PK-12 Programs)	99

TOTAL LUTHERAN SCHOOLS 2,444

Students Enrolled

Early Childhood (Full Day, PreK)	129,351
Grades K-8	107,370
Grades 9-12 (includes International HS)	18,455

TOTAL STUDENTS 255,176

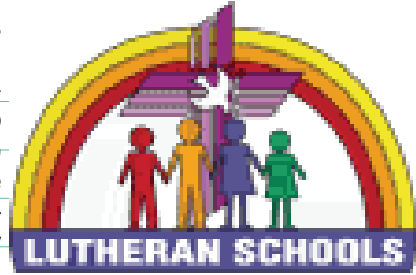
Inside this issue:

School Statistics	1
Funding	4
600 Pound	4
Call Update	5
Dates & Events	6

Top Ten Reasons for Enrolling in a Lutheran School

Some of you may have already read the following from Principal Jim Scriven, Grace Lutheran School, Modesto, California. Before moving to California, Jim served as teacher at Rochester Central Lutheran School.

10. Academic Results – On standardized tests, our students consistently score at and above average. This year's 8th Graders scored better than 72% of 8th Graders nationwide in Reading, 76% in Language Arts, and 83% in Mathematics, all above average for their grade level. Our graduates are easily accepted into all local high schools, public and parochial, often moving right into advanced math as well as various Honors and AP classes. The academic foundation received at Grace has propelled many students through such high school success that they have eventually been accepted at a variety of top tier universities for continuing their education, including: Arizona State University, UC Berkeley, Concordia University Irvine, Concordia University St. Paul, UC Santa Barbara, Valparaiso University, West Point Military Academy, and more.



Celebrate Lutheran Schools!

9. The Kids Love Our School! – Any visit to our campus quickly shows how much our students love their school. The joy on their faces, the excitement in their activities, the energy in their classroom discussions all point to how much they value Grace Lutheran. They love their teachers, their classmates, the field trips, music, computers, art, athletics, and on and on. They come in each day eager and ready for another opportunity to participate, eager to share the experience with each other and tell their parents all about it when they return home.

8. Parents Appreciate GLS, and Choose to Be Involved. – At all grade levels and many activities parents are vitally involved in our school. They help in the classroom, work concessions at basketball games, chaperone field trips, and participate in fundraising support for the school. Parents are in high percentage attendance at our performance events. They remain our number one source for publicizing the school to the community, sharing their Grace experience with friends, family, and co-workers.

7. We Have an Excellent Preschool. – Preschool education sets an excellent foundation for the years of elementary schooling to come. Under the guidance of Preschool Director Heidi de la Motte, our Preschool has established and maintained a reputation for excellence in program, nurture, value, and service that is second to none in our community. Full day, half-day, and preschool only programs are available, meeting the needs of preschoolers three on up. Our Christ-centered preschool program helps children fall in love with learning while being surrounded by the love of our Savior.

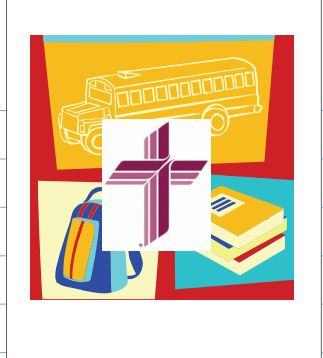
6. Tuition Assistance is Available. – If a family qualifies for need-based tuition assistance, up to 75% of tuition may be covered by an assistance grant. We strive to ensure that money never interferes with parents' desire to give their children the gift of a lifetime, an excellent Christ-centered education, preparing children for life in the world today as well as life eternal.

5. We are Affordable. – Visitors are surprised at how reasonably priced our quality education program is compared to other high quality Christian schools in our area. To choose a different Christian school in the Modesto area that comes anywhere close to a similar combination of program, staffing, and facility found at Grace Lutheran, families have to pay \$1000 or more per child over our school tuition. Families are able to spread payments out over various monthly plans. A child can attend our elementary program for just \$88 per week (based on a 52-week division of the annual tuition). Families who pay in full up front even receive a discount off of that rate. We are positive we offer the absolute best value in Christian education in Modesto!

Top Ten Reasons continued...

4. Outstanding Teachers – Our professional educators are fully qualified and thoroughly educated, with many already holding or pursuing Master's degrees. They all have years of experience in Christian education, and have demonstrated their commitment and passion to sharing Christian faith and values with children and families while passing on their lifelong love for learning.

3. Our student-teacher ratio is kept low. – Small class sizes at all grade levels allow students to receive excellent attention, with teachers able to appropriately address learning hurdles and intellectually challenge students. The children stay interested and motivated all day long. We maintain a 9-1 student-teacher ratio for our youngest children, the Junior Preschoolers, and a 10-1 ratio for the Senior Preschoolers, both well under the state-required limit of 12-1 for these preschool levels. At the K-8 level, the average class size is 15 students, and a maximum of 20 is set for Kindergarten, 24 for the upper grade classrooms.



Lutheran Schools are Christ Centered.

2. Core Knowledge Sequence Curriculum – In pursuit of academic excellence, greater fairness, and higher literacy, our school has joined with schools and districts across the nation in implementing this solid, specific, shared, and sequenced core curriculum, establishing strong foundations of knowledge, grade by grade. The Core Knowledge Sequence provides a clear outline of content to be covered at each grade level, PS-8, ensuring our students enter each new grade ready to learn while also preventing the many repetitions and unfortunate gaps that characterize much current schooling. The Sequence also intentionally provides all children, regardless of background, with the shared cultural knowledge they need to be included in our national literate culture. Beyond Core Knowledge we fill out our curriculum with other instructional components vital to a well-rounded education: faith instruction, physical education, computers, music (general, vocal, and instrumental), Spanish, and art.

And the Top Reason for Enrolling in a Lutheran School:

1. We are Christ-centered. – We believe the Bible is the completely accurate and true Word of God. We believe we have salvation and eternal life through faith alone, by the grace of God and not by anything we have earned or accomplished for ourselves. We believe in Jesus Christ as our Savior, the Lord of our lives. These core beliefs impact and influence every aspect of our school. Our School Mission Statement says it clearly: Grace Lutheran School exists to provide a Christ-centered education in a loving Christian atmosphere, partnering with parents to instruct and train children in spiritual, academic, physical, social, and emotional areas of development while developing and strengthening relationships with God and each other.

National Lutheran School Funding Academy Webinars

Funding Academy Webinars

A series of Webinars are being offered by the Funding Academy presenters.

Webinar III – Financial Indicators

Dave Sommermeyer – March 9 – 11:00 am Eastern

Webinar IV – Role of the Admissions Counselor

Joel Koerschen – March 23 – 11:00 am Eastern

Webinar V – Engaging Congregations in Change

Ed Grube – April 6 – 11:00 am Eastern

Webinar VI – Teaching Stewardship

Perry Bresemann – April 20 – 11:00 am Eastern

Webinar VII – Audit Time

Joel Wahlers – May 4 – 11:00 am Eastern

There is no cost to participate.

The webinars are hosted by LCEF in partnership with LCMS School Ministry.

Space is available for 90 participants.

• Requirements:

A computer with internet access.

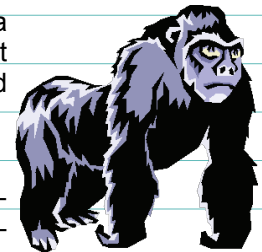
Computer must be equipped with speakers, headset or earphones.

No microphone or camera is necessary.

To register for the webinars, contact Perry Bresemann at perry.bresemann@lcms.org

The 600 Pound Gorilla!

How is the team ministry at your church and school? Do you work together as a leadership team or does the pastor do his thing and you do yours.. One secret about team ministry is that the team must be committed to the mission first and each other second. Great leadership teams are always clear about the mission.



You and your pastor and other support staff are invited to attend our second in-service of the school year. Talk to your ministry team now about attending the in-service on April 27 at Beautiful Savior Lutheran Church/Preschool in Plymouth, MN. If you feel that an effective ministry team is important, this is a workshop for you.

A ministry team's effectiveness is only as good as its relationships with one another. There must be a collaborative climate, in other words TRUST. "Do you want to hear what I think you wish to hear or do you want to hear what I think you need to hear?"

The theme for our second Administrator In-service is *The 600 Pound Gorilla*. This practical hands-on workshop will provide the attendees with new insights on how to maintain and improve the trust factor on their team. The presenters will concentrate on current research on teamwork, theological insight, and their team experience in the parish and collegiate levels.

You will find complete information at <http://mns.lcms.org>. Click on News/Events

Lutheran Educators Call Update - as of March 1, 2010

Accepted	From	To
David Erickson	Stewartville, MN	St. John Lutheran, Stewartville
Laura Langhoff	Concordia, St. Paul	Mt. Hope Lutheran Church, Bloomington
Elin Gomez	Concordia, St. Paul	Eternal Hope Lutheran Church, Brooklyn Park
Jeremy Ashley	Decatur, IL	St. Peter Lutheran School, Edina

Pending	From	To
Marc Paul	Concordia, St. Paul	Concordia Academy, Roseville

Declined	From	To
None at this time		

Calling Congregations	For
Faribault Lutheran School, Faribault	Principal
Zion Lutheran School, Mayer	Administrative Director
St. Paul's Lutheran Church, Prior Lake	DCE
St. John's Lutheran School, NYA	Principal
St. John's Lutheran Church, NYA	DCE
Peace Lutheran Church, Robbinsdale	Director/Teacher
Trinity Lutheran Church, Waconia	DCE/Youth
Central Lutheran School, St. Paul	Teacher (Gr. 6)
Zion Lutheran School, Cologne	Principal/Teacher, Teacher (Gr.1-2, 3-4)
Mt. Hope Lutheran Preschool	Director/teacher
Good Shepherd Lutheran School, N. Mankato	Principal/Teacher
Hope Lutheran High School, Winona	Administrator

Dave is Back!

March 1, 2010 was my first official day back in the office since my heart surgery on December 21, 2009. I must admit that I do miss my afternoon nap, but all is going well. I am trying my best to continue my exercise routine 3-4 times per week. Jeanine is making sure that I eat healthy foods. My energy level is improving and I thank God that I had no damage to my heart. Thank you for the many cards, letters, e-mails and phone calls during my recovery time. Your kindness and encouraging words were a blessing to me. May our Heavenly Father continue to bless you as you serve His children.

Minnesota South District

14301 Grand Avenue South
Burnsville, MN 55306
Phone: 952-435-2550
Fax: 952-435-2581

We're on the Web!
www.mns.lcms.org



The mission of the Schools/Commissioned Ministers of the Minnesota South District is to encourage, support, and promote the ministry of Lutheran schools/congregations and to nurture and equip those who carry out that professional educational ministry, so that Christ is proclaimed and the body of Christ may be built up.

Served in the Minnesota South District by:

David M. Roth-

Assistant to the President in Education

david.roth@mnsdistrict.org

Gae Ash—Administrative Assistant

gae.ash@mnsdistrict.org

Important Dates & Events

March 7-13	National Lutheran Schools Week
March 8	Region 3 Principals at Rochester, 1:30 PM
March 9	Region 1 National Lutheran Schools Celebration at CSP
March 11	Region 2 National Lutheran Schools Celebration at LHS – Mayer
March 11	Region 3 National Lutheran Schools Celebration at RCLS, 1:00 PM
March 12-13	Minnesota Early Childhood Conference at CSP
March 16	Region 4 Principals at Immanuel, Lakefield, 12:30 PM
March 23	Region 2 Principals at LHS-Mayer, 11:00 AM
April 1	Maundy Thursday
April 2	Good Friday
April 4	Easter Sunday
April 15	Region 1 Principals at CSP, Noon
April 20	High School Administrators at Concordia Academy, 10:00 AM
April 27	Administrator In-service, Beautiful Savior, Plymouth, 8:30 AM
Aug. 3-5	Administrators' Retreat, Trego, WI
Oct. 21	President's Conference, Verizon Center, Mankato

